

# Lösungen Arbeitsplan Mathe

~ Bruchrechnung ~

1. Teil

S. 21/24/28  
S. 30 2 B

S. 21 Nr. 6 (o)

a)  $\frac{3}{10}$    b)  $\frac{5}{6}$    c)  $\frac{5}{10} = \frac{1}{2}$    d)  $\frac{11}{16}$    e)  $\frac{2}{4} = \frac{1}{2}$    f)  $\frac{5}{16}$

S. 21 Nr. 7 (o)

b) / c) / d) / f)

S. 21 Nr. 6 (g)

a)  $\frac{3}{5}$    b)  $\frac{3}{4}$    c)  $\frac{3}{8}$    d)  $\frac{3}{6}$    e)  $\frac{3}{12}$    f)  $\frac{3}{10}$

S. 21 Nr. 7 (g)

a) ungerichte Verteilung; "≠ fair geteilt"

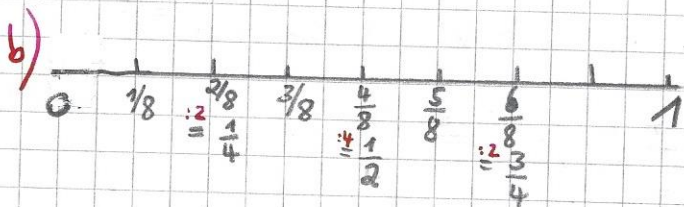
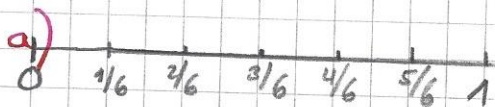
f) " ; "

c)  $\neq \frac{3}{4}$

S. 24 Nr. 3 (o)

A:  $\frac{1}{12}$    B:  $\frac{2}{12}$    C:  $\frac{4}{12}$    D:  $\frac{6}{12}$    E:  $\frac{9}{12}$

Nr. 4 (o)



Nr. 3 (g)

A:  $\frac{1}{8}$    B:  $\frac{2}{8} = \frac{1}{4}$    C:  $\frac{4}{8} = \frac{1}{2}$    D:  $\frac{6}{8} = \frac{3}{4}$

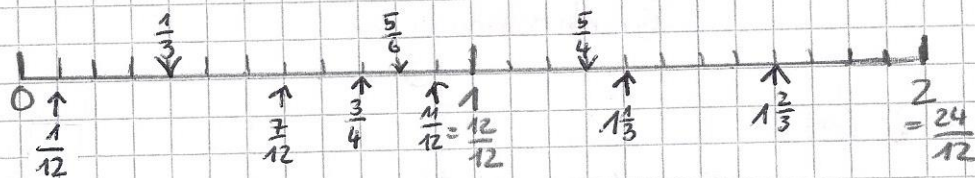
Nr. 4 (g)

HV: 12 → alle Brüche erweitern auf " $\frac{1}{12}$ " tel.

$\frac{5}{6} = \frac{10}{12}$  |  $\frac{1}{3} = \frac{4}{12}$  |  $\frac{3}{4} = \frac{9}{12}$  |  $\frac{5}{4} = \frac{15}{12}$  |  $1\frac{1}{3} = \frac{1 \cdot 3 + 1}{3} = \frac{4}{3} = \frac{16}{12}$  |  $1\frac{2}{3} = \frac{1 \cdot 3 + 2}{3} = \frac{5}{3} = \frac{20}{12}$



Zahlenstrahl zeichnen: 1 Kästchen = 1 cm



S. 28 Nr. 7 (a)

a) 4    b) 5    c) 10    d) 3    e) 8    f) 8

Nr. 8 (a)

a) 3    b) 10    c) 5    d) 4    e) 8    f) 3

Nr. 9 (a)

a)  $\frac{12}{18} \stackrel{\cdot 6}{=} \frac{2}{3}$     b)  $\frac{16}{24} \stackrel{\cdot 8}{=} \frac{2}{3}$     c)  $\frac{18}{27} \stackrel{\cdot 9}{=} \frac{2}{3}$

d)  $\frac{20}{50} \stackrel{\cdot 10}{=} \frac{2}{5}$     e)  $\frac{30}{54} \stackrel{\cdot 6}{=} \frac{5}{9}$

Nr. 10 (a)

a) 3 A    b) 9 F    c) 4 F    d) 9 F

e) 3 N    f) 24 B    g) 6 A    h) 11 B

i) 8 Y

S. 30 Nr. 2

a)  $\frac{2}{5} < \frac{4}{5}$     b)  $\frac{2}{6} < \frac{3}{6}$     c)  $\frac{3}{7} < \frac{5}{7}$     d)  $\frac{3}{10} < \frac{1}{2} \stackrel{\cdot 5}{=} \frac{5}{10}$

e)  $\frac{2}{3} \stackrel{\cdot 2}{=} \frac{4}{6} < \frac{5}{6}$     f)  $\frac{3}{5} \stackrel{\cdot 4}{=} \frac{12}{20} > \frac{3}{4} \stackrel{\cdot 5}{=} \frac{15}{20}$

B

a)  $\frac{5}{8} < \frac{7}{8}$     b)  $\frac{5}{6} > \frac{4-2}{6} = \frac{2}{3}$     c)  $\frac{5}{8} < \frac{3}{4} \stackrel{\cdot 2}{=} \frac{6}{8}$     d)  $\frac{2}{3} \stackrel{\cdot 5}{=} \frac{10}{15} < \frac{4}{5} \stackrel{\cdot 3}{=} \frac{12}{15}$

① Methode der Selbstkontrolle mit Rotstift durchführen

② S. 30 Nr. 4-5 (a/g) + S. 36. + S. 45 werden nach den Osterferien

(sofern die Schule wieder startet) im Unterricht besprochen und müssen vorgezigt werden